

Conductive Plastic Angle Sensor

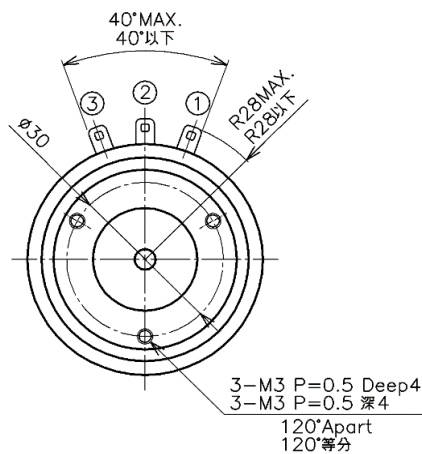
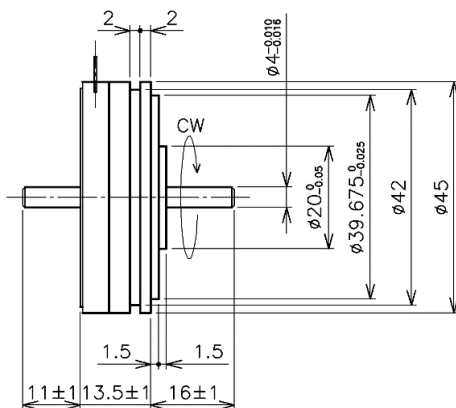
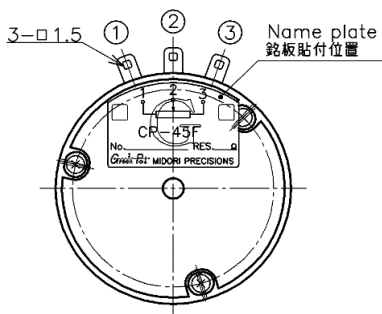
# CP-45F Series CP-45F, CP-45FB



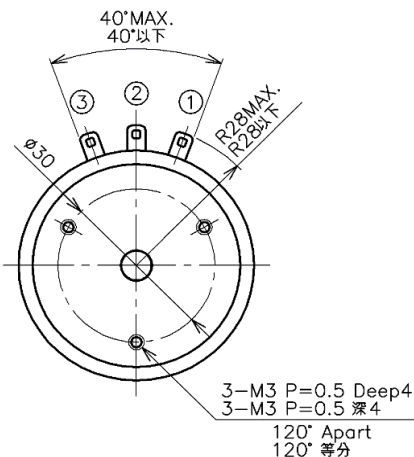
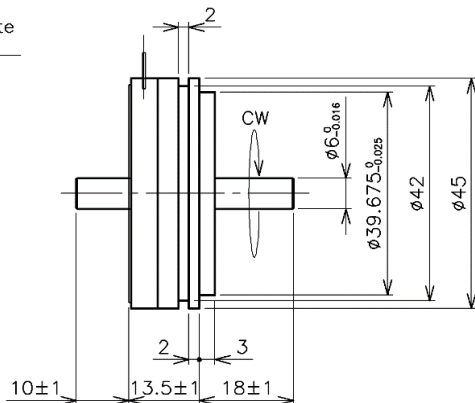
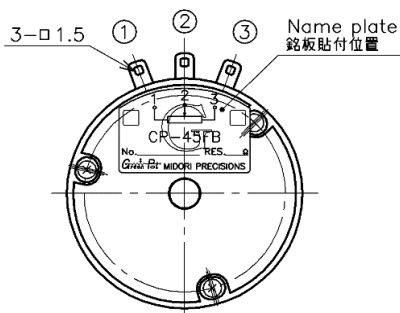
- Conductive Plastic Angle Sensor
  - Prolonged lifetime - 50 Mil. Revolution min.
  - Effective Electrical Travel : 350°
  - Independent Linearity : ±0.1%
  - Retio Output
  - Servo Mount and Screw Mount
- 【Options】**
- Shaft L2 side 0mm. (w/Screw driver slot)
  - Additional Center Tap :  
 C.T(A) ... No shorted angle  
 C.T(B) ... Shorted on Tap (Shorted angle 3°approx.)

## Dimension [mm]

CP-45F



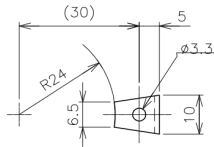
CP-45FB





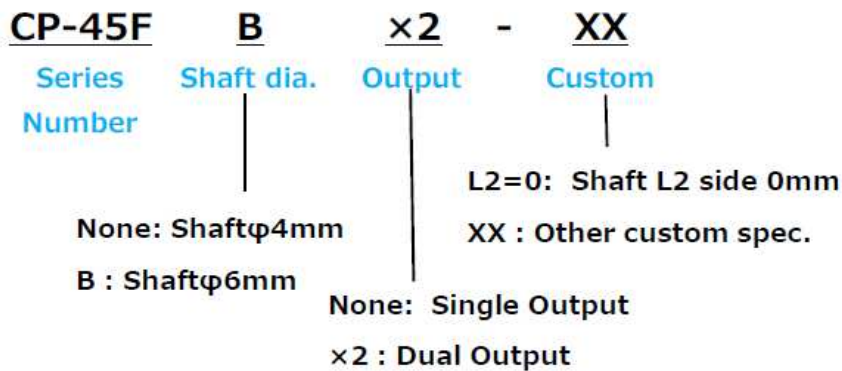
■ Accessories

Mounting Cleats : 3 pieces



t=1.2

**【CP-45F Series Model Number Designation】**



■ Handling Instruction

- To avoid burnout of resistive element, do not supply more than 1mA current to terminal 2.
- Miswiring might cause burnout of resistive element.
- To reduce sliding noise, add load resistance should be more than 100times and less than 1000times of total resistor
- Slight continuous vibration such as dither might cause short lifetime of the sensor.